

Trail History

Wilkerson Pond

An eight acre pond was built because of the dam break in 1990. In 1990, the pond had to be drained and excavated due to another pond on base being built on a historical landmark. Fortunately, this was not the case for Wilkerson Pond.

Donna's Pond

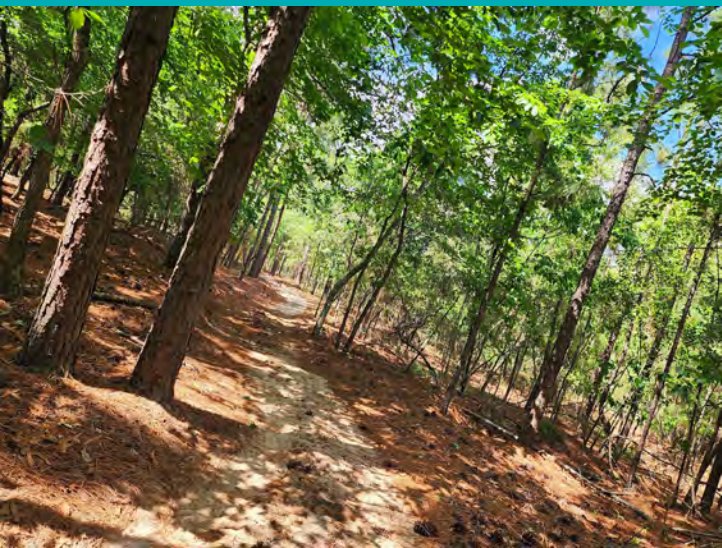
This pond is dedicated to a mare that served at Hilltop for many years. She was known for having a huge personality, lots of sass and going swimming with or without customers.

The View

Formally know as 17th Street Landfill, The View has transformed into one of the most beautiful sights on Fort Eisenhower. It was opened in 1964 and closed in 1987. It is a 50-acre plot of land, but only 25 acres are visible in the view.

Beaver Dam

Beaver Dam is one of the few remaining sections of Scouts' Lake or Signal Lake, as it was originally named. This was a big hot spot for the boy scout Troop 99 (hence the nickname 'Scouts' Lake'). There are two remaining fireplaces, a flagpole and a concrete foundation that are left from the recreation area.



6 Trails

Black -- 1 Hour

Orange -- 25 Minutes

Green -- 1 Hour

Red -- 45 Minutes

Blue -- 1 Hour

Teal -- 2 Hours